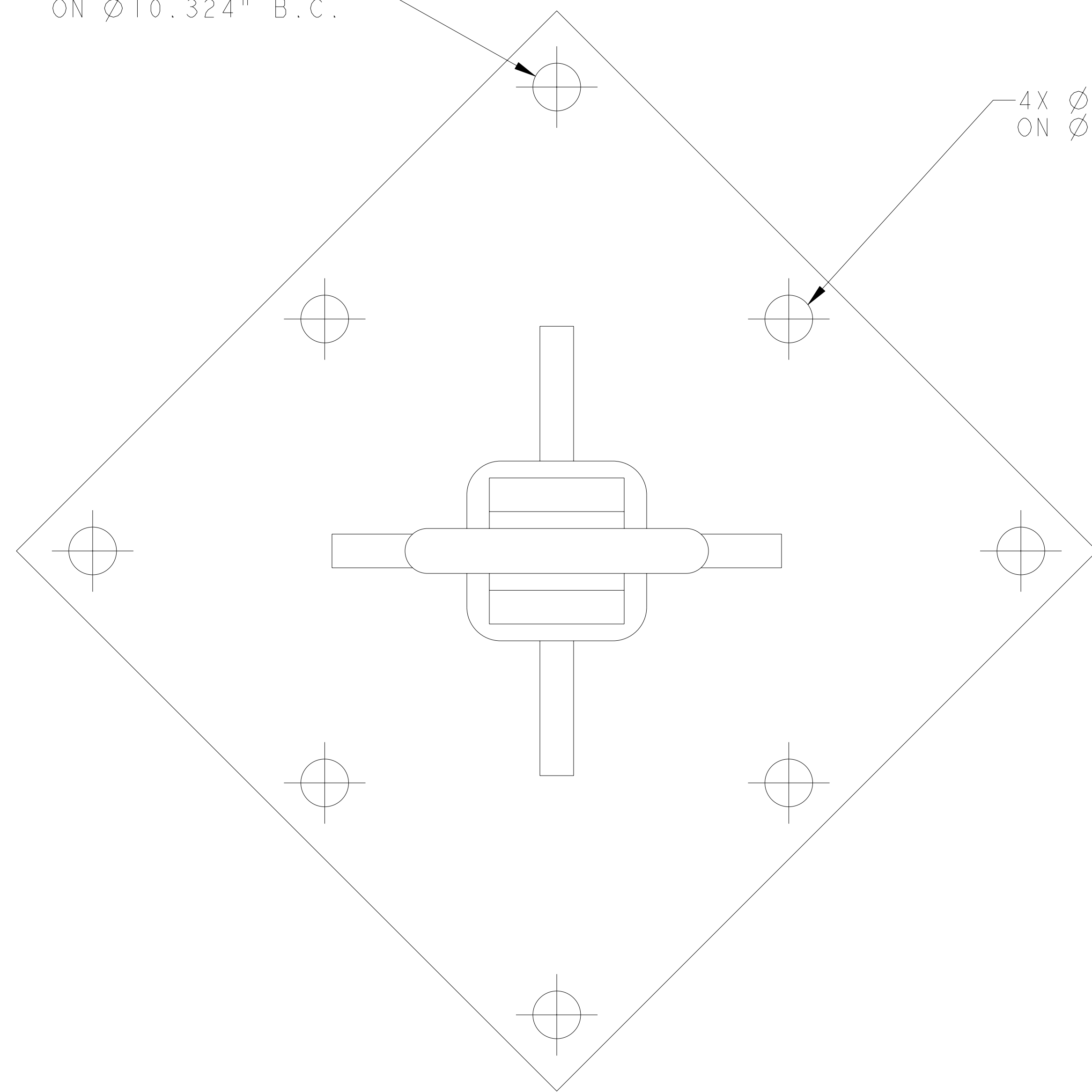


8-1/2" SQ. PLATE, 3/8" THK STEEL

4X Ø.531 THRU EQ SPC'D
ON Ø10.324" B.C.

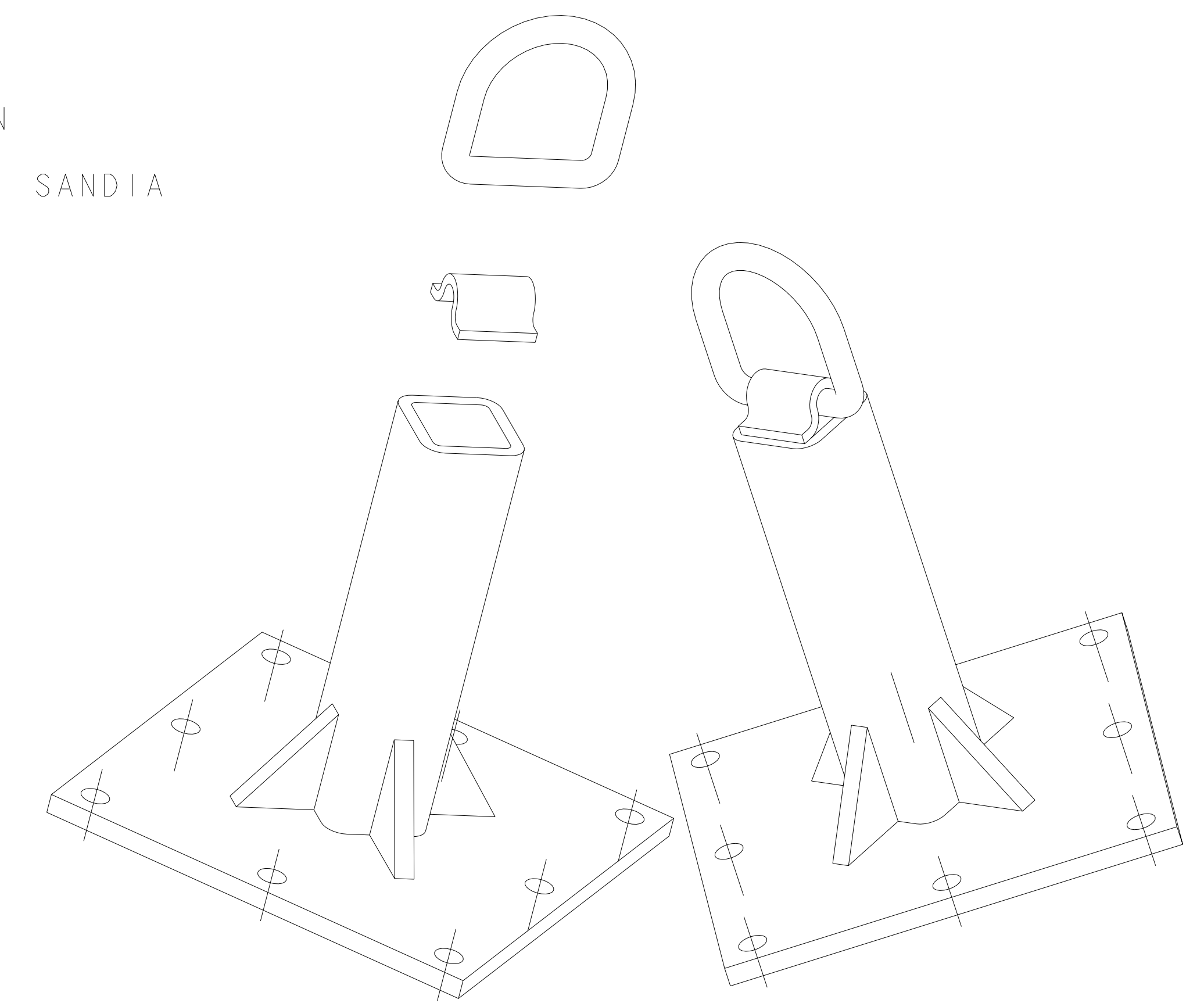
4X Ø.531 THRU EQ SPC'D
ON Ø7.30" B.C.



NOTES:

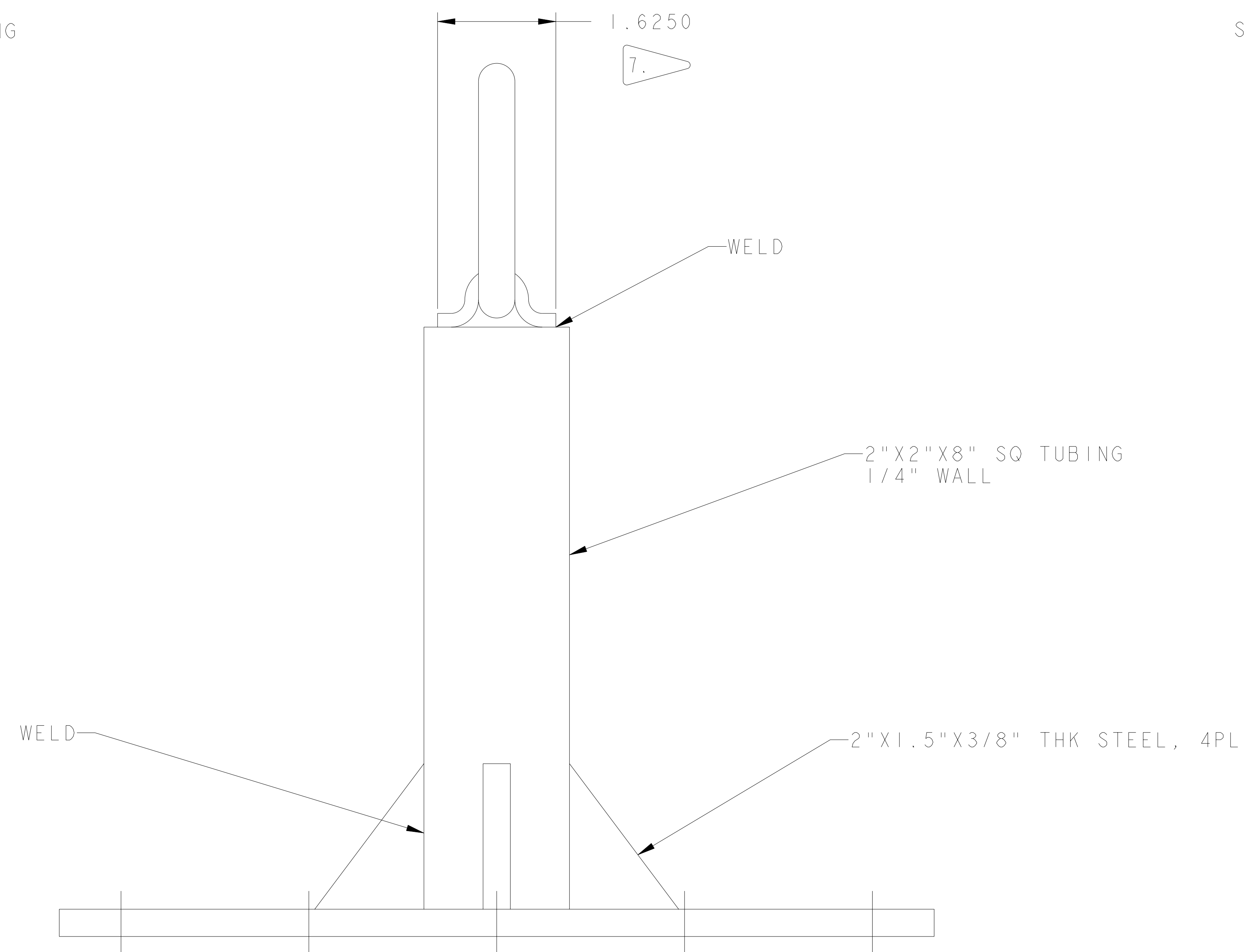
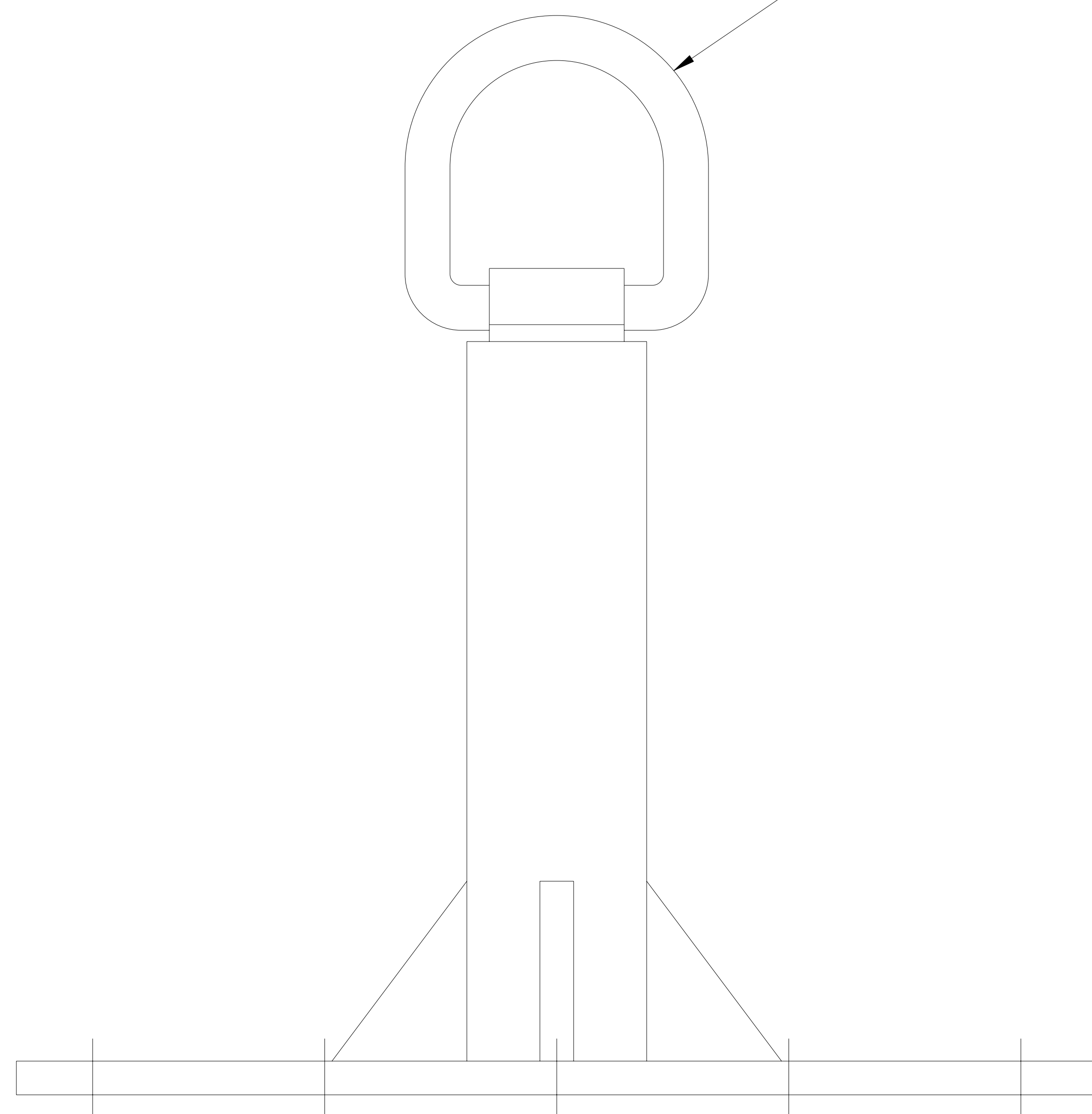
1. MATERIAL: 1018 STEEL
2. ARC WELD 7018 ROD ELECTRODE
3. WELDING PER ANSI/AWS D1.1-94
INSPECTION #6
VISUAL 8:15
MAGNETIC PARTICLE 8:15.5
4. 2" X 1/4" WALL X 8" LONG SQUARE TUBING
5. STEEL FLAT BAR COLD ROLLED
ASTMA108, C1018
3/8" X 1-1/2"
3/8" X 10"
6. QUALITY TRAILER PRODUCTS
D-RING B38
FORGED LASHING RING
C-1045 STEEL FORGED 1/2" DIA RING
7. MODIFY HOLDING BRACKET TO WIDTH SHOWN
8. FOR QUESTIONS, CONTACT HERMAN MOLINA, SANDIA NATIONAL LABORATORIES, 505-284-8772.

PART NUMBER	REVISIONS		
	ISS	SHEET ZONE	DATE
-	A	ORIGINAL ISSUE	11-19-04



SCALE 1/2

FORGED STEEL 1/2" DIA RING



CURRENT ISSUE APPROVALS		DATE
DRAWN:	QUESTION CONSTRUCTION	11-19-04
CHECKED:	H. MOLINA	
DESIGNED:	H. MOLINA	
APPROVED:	TINA CORDOVA	

DRAWING: SUPPORT_STAND	MODEL: ASM0001	TYPE: ASSEM	TITLE
SANDIA NATIONAL LABORATORIES (NM)			SUPPORT STAND
ENGLISH			
DRAWING CLASSIFICATION	SIZE	DRAWING NUMBER	ISSUE
UNCLASSIFIED	E	Q83766	A
THIRD ANGLE PROJECTION	ORIGIN	STATUS	DATE
	PRO/E-WILDFIRE	SA	11-19-04